



10W DC-DC Regulated Dual Output

ASD10H-D series



■ Features :

- Wide 4:1 DC input range
- In/out capacitance 1000pF
- Protections: Short circuit / Overload / Over voltage
- 500~1500VDC I/O isolation for D/D
- Built-in EMI filter
- Cooling by free air convection
- Built-in remote ON-OFF control
- 100% full load burn-in test
- Fixed switching frequency at 400~450KHz
- Lost cost
- High reliability
- 2 years warranty

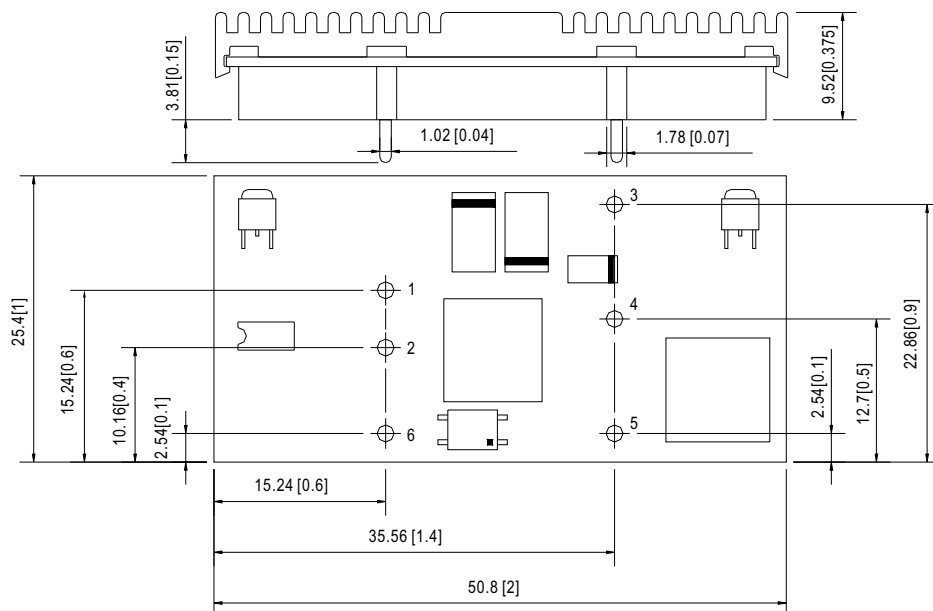


SPECIFICATION

MODEL		ASD10H-12D5		ASD10H-12D12		ASD10H-12D15		ASD10H-48D5		ASD10H-48D12		ASD10H-48D15	
OUTPUT	DC VOLTAGE	5V	-5V	12V	-12V	15V	-15V	5V	-5V	12V	-12V	15V	-15V
	RATED CURRENT	1A	1A	0.42A	0.42A	0.33A	0.33A	1A	1A	0.42A	0.42A	0.33A	0.33A
	CURRENT RANGE	0.05 ~ 1A	0.05 ~ 1A	0.02 ~ 0.42A	0.02 ~ 0.42A	0.016 ~ 0.33A	0.016 ~ 0.33A	0.05 ~ 1A	0.05 ~ 1A	0.02 ~ 0.42A	0.02 ~ 0.42A	0.016 ~ 0.33A	0.016 ~ 0.33A
	RATED POWER	10W											
	RIPPLE & NOISE (max.) <small>Note.2</small>	75mVp-p(10% ~ 100% load)											
	VOLTAGE TOLERANCE <small>Note.3</small>	±2.0% max.											
	LINE REGULATION	±1.0% at 10% ~ 100% load											
	LOAD REGULATION	±1.0% at 10% ~ 100% load											
INPUT	RATED DC INPUT	12VDC						48VDC					
	VOLTAGE RANGE	9.2 ~ 36VDC(50V surge 10ms)						22 ~ 72VDC(100V surge 10ms)					
	EFFICIENCY (Typ.)	73%		74%		74%		76%		77%		77%	
	DC CURRENT	1.4A/12VDC						0.4A/48VDC					
	SHUTDOWN IDLE CURRENT	15mA											
PROTECTION	OVERLOAD	Above 105% rated output power Protection type : Over power limiting, recovers automatically after fault condition is removed											
	OVER VOLTAGE(CLAMP)	5.75 ~ 7.5V	-5.75 ~ -7.5V	13.8 ~ 18V	-13.8 ~ -18V	17.3 ~ 22.5V	-17.3 ~ -22.5V	5.75 ~ 7.5V	-5.75 ~ -7.5V	13.8 ~ 18V	-13.8 ~ -18V	17.3 ~ 22.5V	-17.3 ~ -22.5V
	SHORT CIRCUIT	Recovers automatically after fault condition is removed											
FUNCTION	ON/OFF CONTROL	Logic "1" OPEN: ON logic "0" GND: OFF											
ENVIRONMENT	WORKING TEMP.	-25 ~ +71℃											
	WORKING HUMIDITY	0% ~ 95% RH max. Heatsink temp.110℃											
	STORAGE TEMP., HUMIDITY	-40 ~ +125℃, 0 ~ 95% RH											
	TEMP. COEFFICIENT	±0.03%/℃ (0~50℃)											
SAFETY & EMC	SAFETY STANDARDS	UL60950, TUV EN60950 approved											
	ISOLATION VOLTAGE	I/P-O/P:0.5KVDC for ASD10H-12D series 1.5KVDC for ASD10H-48D series											
	ISOLATION RESISTANCE	I/P-O/P:100M Ohms / 500VDC / 25℃ / 70% RH											
	EMC EMISSION	Compliance to FCC Part15 J											
OTHERS	MTBF	274.4K hrs min. MIL-HDBK-217F (25℃)											
	DIMENSION	50.8*25.4*9.52mm (2**1**0.375") (L*W*H)											
	PACKING	0.02Kg; 300pcs/7Kg/0.97CUFT											
NOTE	1. All parameters NOT specially mentioned are measured at 12,48VDC input, rated load and 25℃ of ambient temperature. 2. Ripple & noise are measured at 20MHz of bandwidth by using a 12" twisted pair-wire terminated with a 0.1uf & 47uf parallel capacitor. 3. Tolerance : includes set up tolerance, line regulation and load regulation. 4. Short circuit not more than 30 second.												

Mechanical Specification

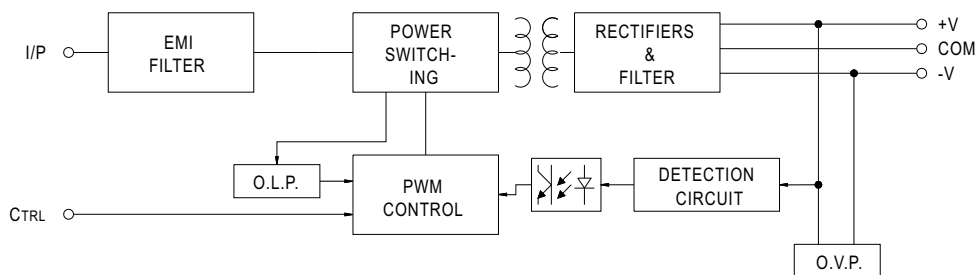
Unit:mm[inch]



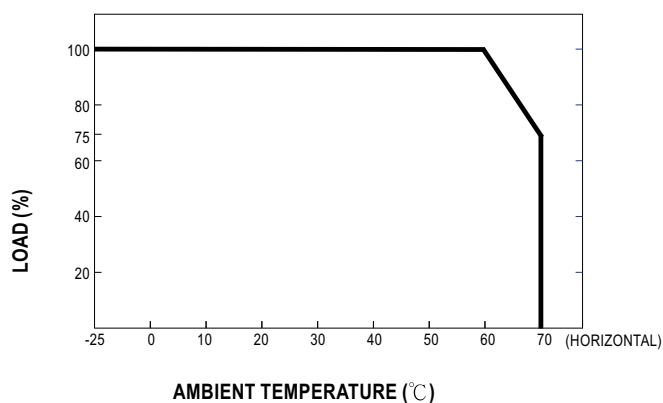
Pin No. Assignment

Pin No.	Assignment	Pin No.	Assignment
1	+INPUT	4	COMMON
2	-INPUT(GND)	5	-OUT
3	+OUT	6	CONTROL

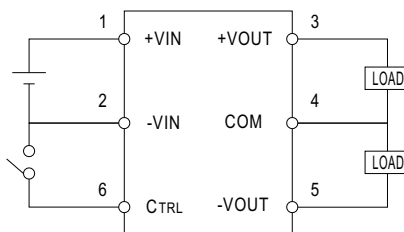
Block Diagram



Derating Curve



ON/OFF Control



CONTROL INPUT.....PIN6
CONTROL COMMON.....PIN2
LOGIC COMPATIBILITY.....CMOS OR OPEN COLLECTOR TTL
CONTROL VOLTAGE
ON.....+5.5VDC min OR OPEN CIRCUIT
OFF.....+2.5VDC max. OR SHORT TO PIN2